

The Keys Newsletter

Messages from St Peter's

18th November 2022

MESSAGE FROM THE HEAD TEACHER

Dear Parent / Carer,

This week has been Inter Faith Week and Anti Bullying week. After a whole school assembly on Monday, the week gathered pace with a number of visitors from different faiths engaging with the children.

Year 4 were visited by Bodhi a Buddhist Monk. The children listened intently to Bodhi talk about Buddhism and they also tried a bit of meditation in the hall. It was memorable experience for all. On Wednesday David Allerton from the Hebrew Congregation visited Year 1 and Year 5 as they learned about Judaism.

Next week we will have visits from Dr. Usama Munir from the St. Helens Mosque and Krishna Dasi who will conduct a Hindu Education workshop.

Below is the extensive timetable over the two weeks. It is hugely important that our children learn about other faiths and cultures, and this will, as always, go hand in hand with our own Religious Education curriculum.

Jigsaw Launch assembly – Celebrating Difference

In class worship - Tolerance Day

Whole School Assembly – Hindu Education

Lesson Study on World Religion key learning focus: symbol, place of worship, holy book, some basic beliefs of the religion – KS2 compare to Christianity

Spirited Arts competition - -produce a 'creative piece'

EYFS/KS1 – Learn about a Festival – Spirited Arts competition -produce a 'creative piece'

Visitor Experience – in-class Talk and a chance to ask questions

Tues 15th – Buddhist - Mahamevnawa Meditation Center Monk– Y4

Wed 16th– Judaism – David Allerton Hebrew Congregation Y5, Y1

Mon 21st– Islam – Dr. Usama Munir, St. Helens Mosque- Y2, Y6

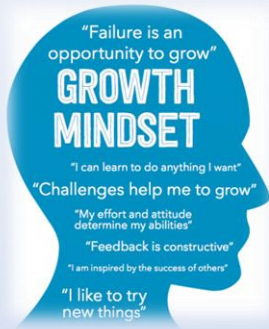
Wed 23rd – Hinduism -Krishna Dasi Hindu Education workshop- Y3

Have a lovely weekend

Mr Robinson



Celebration & Congratulations



GROWTH MINDSET

Reception: Alex Z
Year 1/2: Mazie R
Year 2: Isabelle T-E
Year 3: George M
Year 4: Freya T-E
Year 5: Archie L
Year 6: Ethan T-E



STAR OF THE WEEK

Reception: Ava Rose G
Year 1/2: Finn B
Year 2: Thomas S
Year 3: Evie B
Year 4: Ferne M
Year 5: Lewis J
Year 6: Isla R



VALUES AWARD

Year 5: Jorgie W

COURAGE AWARD

Year 5: Frazer P

REMEMBRANCE DAY

Thank you to all the children who bought a Poppy this year in school for Remembrance Day.

We raised a total of **£121.96**.



BAGS 2 SCHOOL



Leaflets have been sent home regarding the clothing collection from Bags 2 School. The collection date will be: **FRIDAY 25th NOVEMBER 2022**. If you have any good quality, unwanted clothing items please bring to the playground in a plastic bag on the morning of Friday 25th November.

Please note we are unable to take any collection items prior to this date.

PTA COMMITTEE MEETING

There will be a PTA Committee Meeting in school on **Thursday 24th November at 6.30pm**.

ONE MINUTE MATHS



Download the 1-minute maths app

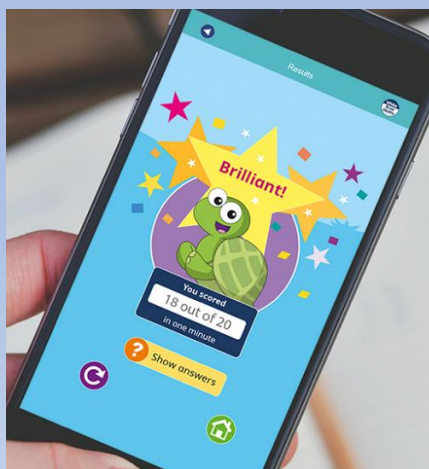
Free to download for teachers, parents and pupils

Key Stage One

We would like to tell you about the 1-minute maths app that you can use at home!

Simply follow the link below and download the app onto your phone or tablet- and get busy! There are different areas to focus on and you get a score at the end. Sounds fun! Could you have a go?

[1-minute maths](#) | [Maths App](#) | [White Rose Maths](#)



SCARLET FEVER INFORMATION

We have had some cases of Scarlet Fever in the school. It is very infectious and parents must respond with speed (Doctors then antibiotics). Please see below for some further information.

Scarlet Fever

Single
Point
Lesson

Scarlet fever is an infectious disease caused by the bacteria *Streptococcus pyogenes*, or group A streptococcus. The same bacteria can also cause impetigo. This is seen in children most commonly between 2 and 8 years. Highly infectious and spread by droplets. It takes about 2 to 5 days to develop symptoms after being infected. Seasonal rises in cases between December and April.

Management of Scarlet Fever

Antibiotic therapy - Penicillin V four times a day for 10 days.
Amoxicillin if Penicillin V is not tolerated.
Encourage to rest and drink plenty of fluids
A soft diet is easier to eat if throat is sore.
Take analgesics as required.

First symptoms - sore throat, headache, fever over 38.3, swollen neck glands, nausea and vomiting.

After 12 to 48hrs –

- Blanching rash starting on the torso and spreading to the rest of the body. The rash is characteristically red, generalized and pinpoint (punctate) with a rough, sandpaper-like texture. It may be accentuated in the skin folds of the neck, axillae, groin, elbows, and knees with a deep red, linear appearance.
- Swollen glands in the neck
- Feeling tired and unwell
- Flushed red face, but pale around the mouth.
- Peeling skin on the fingertips, toes and groin area, as the rash fades.



Strawberry tongue — initially the tongue is covered with a white coat through which red papillae may be seen. Later, the white covering disappears, leaving the tongue with a beefy red appearance.

Exclude from school or work until at least 24 hours after the start of antibiotic treatment.
If not treated with antibiotics, can remain infectious for 2 -3 weeks.

Encourage good hand hygiene.
Good respiratory hygiene.
Do not share towels etc.

Potential complications include ear infection, throat abscess and acute sinusitis.
Serious complication of Scarlet Fever are generally rare.

There is no risk to pregnant women who are in contact with children who have scarlet fever or who have symptoms themselves.
However pregnant women should contact their midwife if there is any doubt of the cause of rash.

Please contact the Infection Control Team if you require any further advice 01744 457314

CHRISTMAS DATES



Please note: Further dates to be added.

| DATE | ACTIVITY |
|-------------------------------------|------------------------------------------------------------------|
| Tuesday 13 th December | 9.45am – Nativity (Rec/Yr1/Y2) 6.30pm – Nativity (Rec/Yr1/Y2) |
| Wednesday 14 th December | Christmas Jumper Day Christmas Craft Day Christmas Lunch |
| Thursday 15 th December | 9.30am – Panto 1.45pm – Nativity (Rec/Yr1/Y2) |
| Tuesday 20 th December | Breakfast with Santa Christmas Parties |

ANNOUNCEMENTS

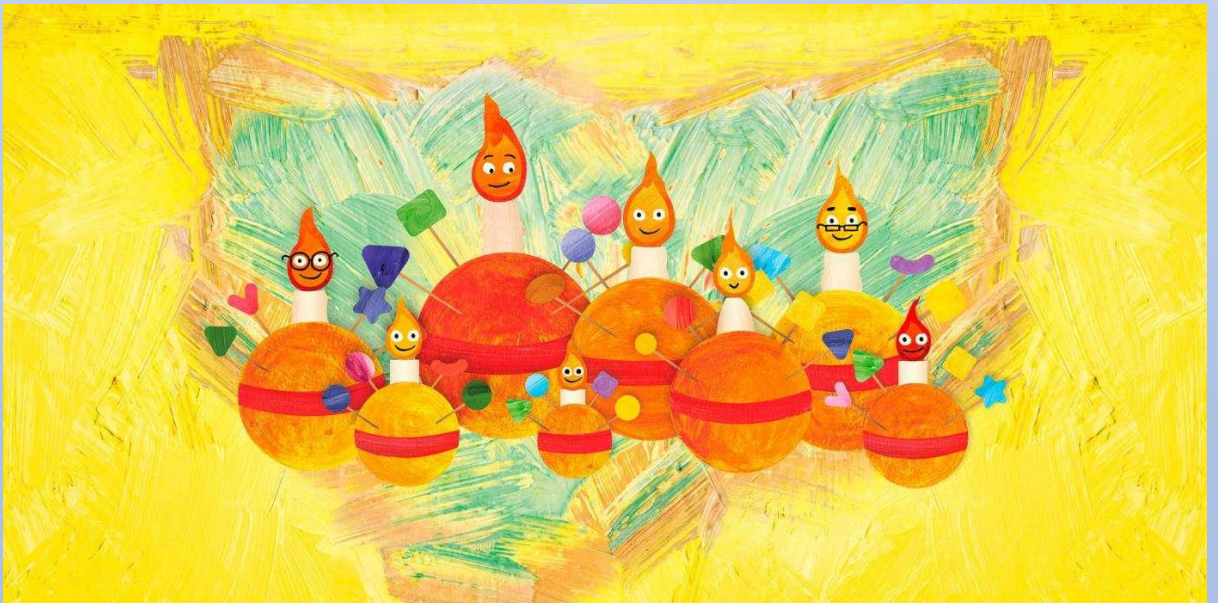
St Peter's Church Christingle Service

Join us for our Crafty Christingle on ***Sunday 11th December*** at **4.00pm**

Make your own Christingle and Christmas crafts and sing carols.

To help us make sure we've got enough resources, please book your free tickets by following the Eventbrite link below.

<https://www.eventbrite.ie/e/crafty-christingle-tickets-455139934797>



St Peter's Church

Church Street, Newton-le-Willows

Christmas Fair

Saturday 26th November

11.00am – 3.00pm



Local Crafters

Tombolas

Home Made Cakes

Santa's Grotto

Refreshments

Raffles



Games

THE BFY CHILDREN'S CHRISTMAS PARTY



DECEMBER 4TH 12-3 PM
at
ST PATRICKS SOCIAL CENTRE



THIS EVENT IS **FREE** TO ALL CHILDREN OF N-LE-W
AGED 5 AND ABOVE

If your child has been to our summer games or craft club, just inbox their name. Otherwise, a form can be sent to you.

(INBOX OUR FB PAGE OR businessforyouth.nlw@gmail.com)

ENTERTAINMENT FROM THE EXCITING



SUPPORTING OUR COMMUNITY

- ❖ PARTY GAMES
- ❖ FREE RAFFLE
- ❖ PRIZES
- ❖ FOOD AND DRINK
- ❖ THE ZANY BFY CREW
- ❖ LOTS OF FUN
- ❖ FATHER AND MOTHER CHRISTMAS



SUPPORTING OUR COMMUNITY



This party is kindly sponsored by our good friends



ALLpaQ Packaging Group

Sustainable Bioprocess
Container Solutions



SCHOOL OPEN EVENINGS



Open Evening



St Peter's C of E Primary School



New intake tours for September 2023

- Monday 17th October: 4.45pm
- Wednesday 2nd November: 4.45pm
- Wednesday 14th December: 4.45pm

Book for an appointment: stpeter@sthelens.org.uk
Tel: 01744 678630



HOLIDAY REQUESTS

Holiday Requests

Please note that all term time holiday requests will be unauthorised. Taking holidays during term time does have a detrimental effect on a child's education. Extended holidays in particular can be the difference between children achieving their year group objectives and not particularly if the pupil then is off for period of time with a sickness. Any pupil that falls below 94% attendance is classed as a cause for concern and will be contacted by the Education welfare Officer.

There are penalties, as set out by St Helens MBC, that could lead to up to £600 for a family of four

[Penalty notices - St Helens Borough Council](#)

DATES FOR YOUR DIARY

Monday 21st November 2022

- Y5 Afterschool Sports Club: 3.30pm – 4.30pm
- KS2 Girls Football Club: 3.30pm – 4.30pm

Tuesday 22nd November 2022

- Y4 Afterschool Sports Club: 3.30pm – 4.30pm

Wednesday 23rd November 2022

- Eco Club: 3.30pm – 4.00pm
- Y1 & Y2 Afterschool Sports Club: 3.15pm – 4.15pm

Thursday 24th November 2022

- Year 6 Swimming
- Year 5 VR Workshop
- Y1, Y2, Y3 Kidslingo: 3.30pm – 4.30pm
- Y6 Afterschool Sports Club: 3.30pm – 4.30pm
- PTA Committee Meeting – 6.30pm

Friday 25th November 2022

- Y3 Afterschool Sports Club: 3.30pm – 4.30pm
- Mad Science Afterschool Club

Please note some of these dates may be subject to change.



OFFICE NEWS



DINNER MONEY

If your child wishes to change their lunch preference please advise the office via email giving **a week's notice**. Payment is taken through the School Money Online Payment System.

UNIFORM

Uniform can be ordered direct from Touchline UK Liverpool Rd, Warrington, WA5 1AE, 01925 413777

sales@touchline-embroidery.com

We also have a small number of items on the School Money site under SHOP which you can pay for then contact school to arrange for them to be sent home with your child.

ABSENCE

When reporting on the absence line, can we politely request that you leave a brief description of your child's illness rather than just saying they are unwell. If your child has vomiting or diarrhoea please note that they should not return to school for a period of 48 hours after the last incident. This is a local authority policy

Applications for Holiday Leave must be submitted to school at **least 4 weeks** in advance. Forms can be found on the school website or requested from the school office. In accordance with Government and Local Authority policy, holidays taken during term time will only be authorised in **exceptional circumstances**.

CHANGES

It is very important that if you change contact numbers, emails or addresses that you advise us as soon as possible. Any changes must be sent into school via email.

Thank you

Contact Details

St Peter's C.E. Primary School
Birley Street
Newton-le-Willows
WA12 9UR
01744 678630
stpeter@sthelens.org.uk
<https://twitter.com/NLWStPeters>
www.st-peters.st-helens.sch.uk

