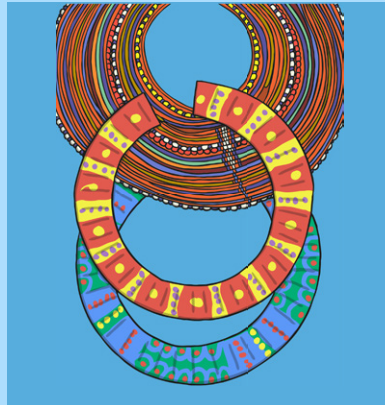


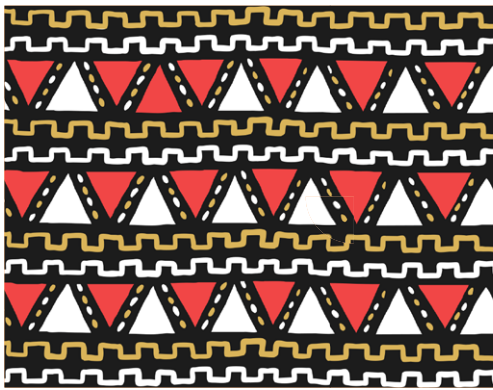
African Paper Plate Necklace

Supplies

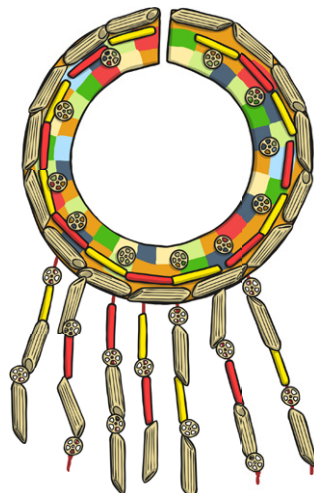
- Paper plates
- Scissors
- Bright coloured paints
- Felt tip pens
- Optional: pasta, beads, wool or straws to decorate



- 1 Cut into the centre of the paper plate. Cut the inside circle out, leaving the outside circle or rim of the plate.
- 2 Decorate the outside ring with brightly coloured paints or use felt tips to make an eye-catching design. Try to create African patterns such as:



- 3 You could attach other materials to your necklace such as pasta, straws, beads or coloured wool.



African Drum

Supplies

- A terracotta plant pot
- Acrylic paints in red, green and black
- Sheet of paper
- Elastic band



- 1 Carefully paint your terracotta pot in bright colours and leave to dry.



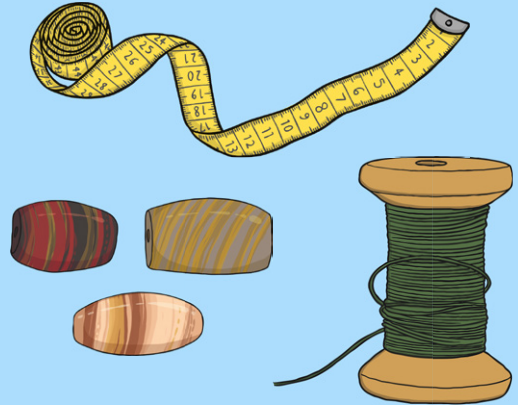
- 2 Cut a large circle of paper and fasten it over your pot with the elastic band, pulling it tight.
- 3 Your drum is finished! Happy drumming!



African Beaded Jewellery

Supplies

- A collection of coloured beads
- Fine shoe lace (preferably coloured), thread, cord or ribbon
- Tape measure
- Jewellery clasps



- 1** Carefully measure your neck or wrist using a tape measure.
- 2** Measure a length of thread, cord or ribbon and cut it to size.
- 3** Choose the beads and carefully thread them onto the bracelet or necklace, one by one. Use different shapes and colours for variety. African necklaces are traditionally bright and colourful.
- 4** When your bracelet or necklace is full, ask an adult to tie or knot it at the back. You could use a jewellery clasp on your bracelet or necklace.



Maasai Mud Hut

Supplies

- Black card sheets
- White paper
- Black marker or felt tip
- Felt tip pens
- Stapler
- Paper plates
- Small sticks or raffia
- Scissors and glue



- 1** Using white paper, draw simple geometric shapes the length of the paper with a black marker or felt tips like the pattern on the right.
- 2** Glue the geometric shapes you have drawn onto the black card, then roll the black cardboard into a cylinder shape and staple to secure.
- 3** To make the roof, take a paper plate and cut in a straight line to the centre of the paper plate. Fold around the edge to make a cone shape and staple.
- 4** Next, on the top of the cylinder, cut 1cm slits all the way around the rim and bend outwards.
- 5** Then staple or stick the paper plate roof to the cylinder.
- 6** Gather small twigs or use raffia and gather into bunches, snip the ends to make sure they are the same length and stick to the paper plate.
- 7** Your hut is now complete! You could make a Maasai small world role play area with lots of mud huts and small world animals together.

