



Geography

Sensational Safari

Let's Explore



twinkl

Aim

- I can draw a simple map.
- I can understand what life is like for people living in Kenya.

Success Criteria

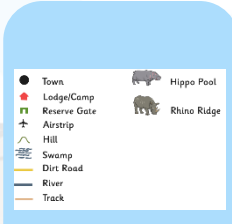
- I can draw a freehand map of Kenya.
- I can label my map with main cities, oceans, rivers and mountains.
- I can explain 3 things I have found out about Kenyan life.
- I can research my own facts to show what I know about Kenya.
- I can make a brainstorm/spider diagram to show what I've learnt.

Key Words

Ask an adult to explain what any of these words that you don't understand.



map



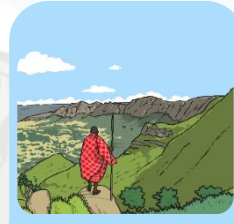
key



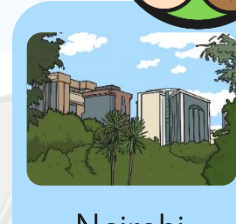
label



Africa
(continent)



Kenya



Nairobi
(capital city)



River Tana



Mount
Kenya



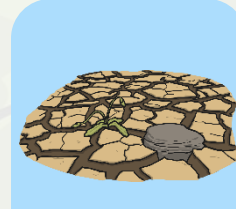
tourists



population



equator



drought



deserts



culture



volcano



Swahili

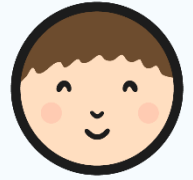


National
Park



savannah

Map from Memory

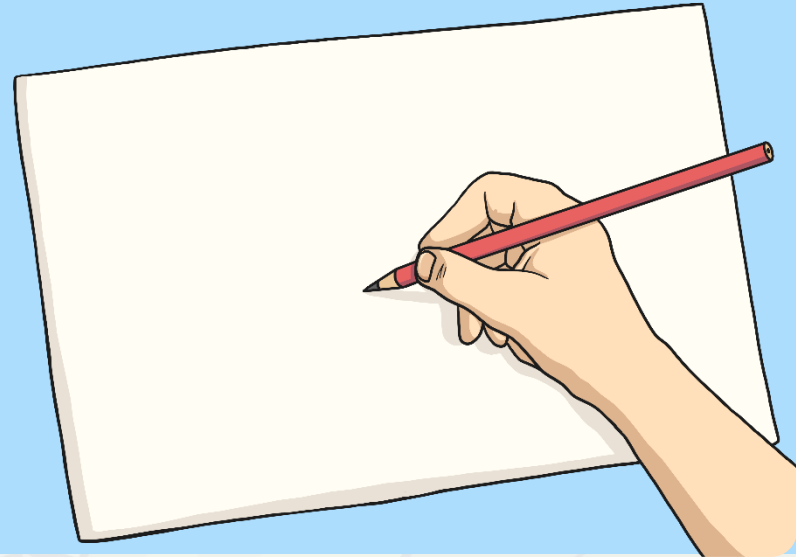


Think about the map of Kenya.

Close your eyes and picture what the shape of the country looks like.

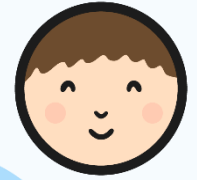
'Air draw' the map with your finger.

Draw a freehand map of Kenya from memory.



Challenge:

- Can you label any cities, rivers, oceans or countries which border Kenya using the word bank on the next slide to help you?
-



Mombasa

Indian Ocean

Nairobi

Kisumu

Lake Victoria

Great Rift Valley

Lake Turkana

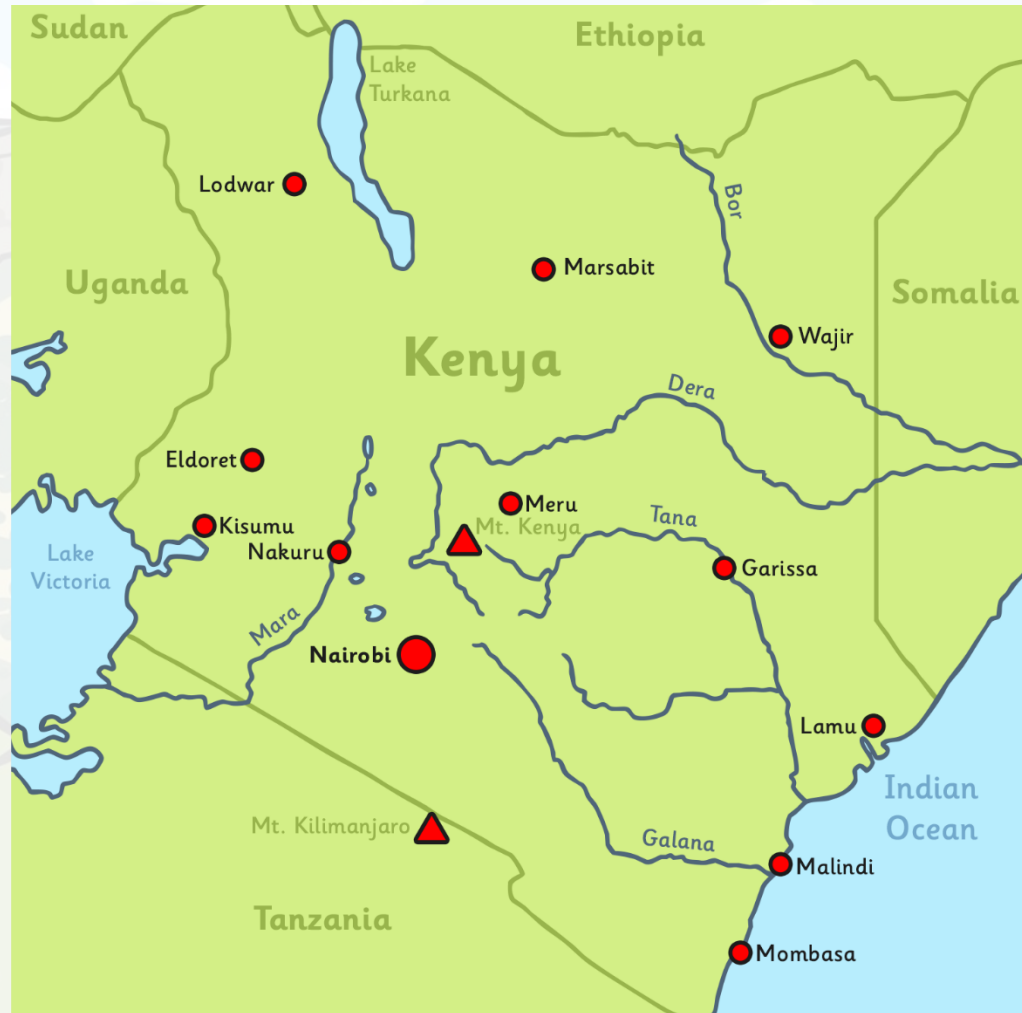
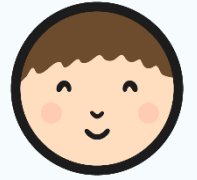
Mount Kenya



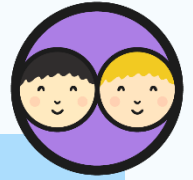
Map from Memory Word Bank

Map from Memory

Can you add more?






What's Stuck with You?



1. What do you know already about Kenya?
2. What did we learn about Kenya in our first lesson?
3. What would you like to find out about?

Geography: Sensational Safari

K	W	L
What I know	What I want to know	What I have learnt
		

Exploring Kenya



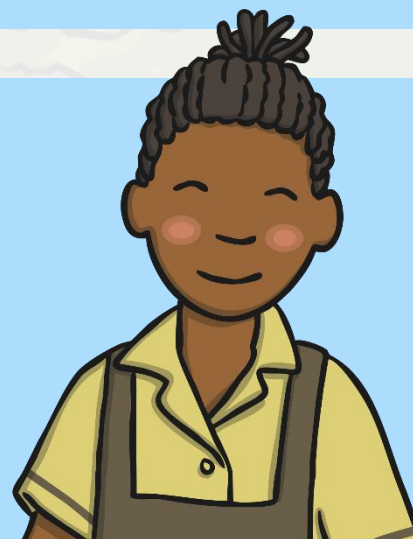
Watch this short video about Kenya.



What can we find out about Kenya?

Does this video clip answer any of your questions?.

- What is the weather like in Kenya?
- Why is the weather like this?
- What do we know about the weather in the UK?
- What special foods are eaten in Kenya?
- What is school like in Kenya?
- How might going to school in Kenya be different or similar to going to school in the UK?



Exploring Kenya



The capital city is Nairobi. Mombasa is the largest city in Kenya.

Kenya's population is around 44 million!



Exploring Kenya

Weather and Climate



Kenya lies on the Equator, which means the climate is hot, sunny and dry for most of the year.



Mount Kenya is high enough to have snow all year round. It is very cold in the mountains. In the highlands it is cool.



In the north it is hot and dry with arid deserts. In the west it is hot and humid and the rainfall can be highest here. If there is no rainfall for a long time, droughts can occur.



Exploring Kenya

Culture



More than 60 languages are spoken in Kenya! The official languages of Kenya are Swahili and English.



Music and storytelling are very important in Kenya.



There are many different types of food in Kenya such as cassava, ugali and Kenyan stew. Maize and other cereals are the staple grains.



Exploring Kenya

Rivers and Mountains



The Tana river is the longest river in Kenya.



Mount Kenya is the highest mountain in Kenya, and the country itself was named after the mountain!



Exploring Kenya

The Great Rift Valley



The Great Rift Valley is an enormous valley of mountains which runs from the north to south of Kenya. The valley has a chain of volcanoes which are still 'active' (alive).

Lake Victoria, the second largest lake in the world, is part of the Great Rift Valley.



Exploring Kenya

Going to School



Not all Kenyan children go to school. Many children are too busy helping their families by working on the land, farming, cooking or fetching water.

Some children may have over an hour's walk to school.
Some children may be different ages but in the same year group.
Some schools have very few resources.



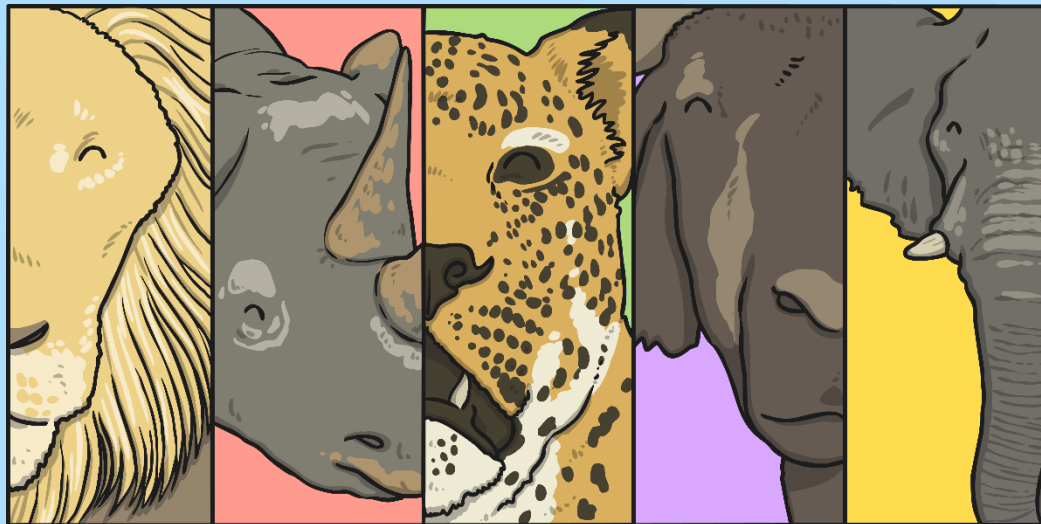
Exploring Kenya

Animals



Kenya has many different species of animals. Millions of people visit Kenya each year to see the huge savannah and the animals that inhabit it such as elephants, lions, cheetahs, meerkats and zebras.

The 'big five' animals in Africa are the African lion, white/black rhinoceros, African leopard, Cape buffalo, and the African elephant.



Exploring Kenya

National Parks

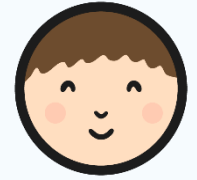


Kenya has over 50 nature reserves and national parks to protect these animals. The Maasai Mara reserve is the most popular.



Photo courtesy of ninara (@flickr.com) - granted under creative commons licence - attribution

My Brainstorm



You are going to make a brainstorm/spider diagram show what you have learnt so far about the country.

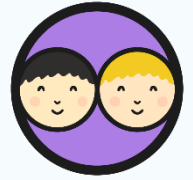
It could include lots of facts, small maps, key words and pictures about Kenya.

Challenge: Use books, maps and the Internet to research your own facts and add them to your brainstorm!

- What else can you find out?



Google It!



Use Google Maps to explore Kenya in more detail.



What places can you find?

What do you think of them?

What oceans, seas, mountains, rivers or landmarks can you find?

Can you use Google Street View?

What is happening in the photographs?

Aim

- I can draw a simple map.
- I can understand what life is like for people living in Kenya.

Success Criteria

- I can draw a freehand map of Kenya.
- I can label my map with main cities, oceans, rivers and mountains.
- I can explain 3 things I have found out about Kenyan life.
- I can research my own facts to show what I know about Kenya.

