



**ST PETER'S**  
C.E. Primary School



# The Keys Newsletter

**7<sup>th</sup> March 2025**

Dear Parent / Carer,

This year's Book Week focused on *The Lost Words* by Robert Macfarlane and Jackie Morris.

The children had a wonderful time exploring many areas of rural Newton-le-Willows, looking for wildlife including birds, insects, trees, and plants. A huge thank you to Mr Badley and all the staff for organising such a fantastic day, and also to everyone who has bought a book at this term's book fair.

The last time I looked, we had sold £1,500 worth of books — an incredible achievement!

Recently, I highlighted the importance of understanding the admissions process for St Peter's. The school remains highly sought after and was recently featured in the Liverpool Echo as one of the most oversubscribed in the Mersey City Region. Following our Ofsted inspection, we are now receiving enquiries from parents whose children are not yet walking. This may seem early, but as you know, the second admissions category requires 24 consecutive months of once a month church attendance stamps. If you miss a month, the count resets to zero. This criterion takes priority over the sibling rule, which is third on the list.

It is also important to note that if an older sibling is leaving for high school in the same year you apply for a Reception place, the sibling criterion does not apply. In this case, if you do not meet the church attendance requirement, your application will fall under category six. All of this is out of my control and having attended many appeal panels, it is hugely difficult for all concerned, even those who do not have a sibling, but have set their hearts on the school.

Understanding these criteria is essential to securing a place at St Peter's. Please look at our website page: [St Peter's C.E. Primary School: Admission and Appeal Arrangements](#)

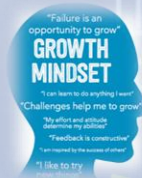
Please note, letters were sent out via School Spider earlier this week with instructions of how to book your parents evening appointments. The booking system goes live on Monday 10<sup>th</sup> March at 6pm.

Have a lovely weekend,  
Mr Robinson  
Headteacher



**This week's Courage certificate is for Enquiry:**

Joanna – Reception  
Elodie – Year 1  
Harrison - Year 2  
Ananda – Year 3  
Jonathan – Year 5  
Tilly – Year 6



**GROWTH MINDSET**

**STAR OF THE WEEK**

Grace GD & Anna – Reception  
Florence – Year 1  
Penny – Year 2  
Penny – Year 3  
Thomas – Year 4  
Harry – Year 5  
George – Year 6

Sophia M – Reception  
Leo – Year 1  
Jude – Year 2  
Faye – Year 3  
Teddy – Year 4  
Micah – Year 5  
Emilia G – Year 6



**VALUES**

Ellie – Love & Kindness – Reception  
Sarah – Respect – Year 1  
Daniel – Love – Year 2  
Dominic – Respect – Year 3  
Cece – Love – Year 4  
Alanna – Hope – Year 5  
Sophie – Love – Year 6

## World Book Day 2025

The whole school were out and about on Wednesday celebrating World Book Day through the book *The Lost Words*, and we certainly got the weather! Each class went looking for bluebells, ivy, brambles, larks, magpies, and starlings to name a few (all words that have been removed from the Oxford Junior Dictionary). Our aim was to rediscover those words, explore why they're so intrinsic to British woodland and respond in our way through writing. Look out for something very special we are trying to get published in the not-too-distant future...



## Where, how and why?

Design a poster showing where in the world you would like to visit



Where, how and why?



**Where?** Where might you want to travel to? Give a geographical overview of the place that you would like to visit - either local or much further afield. What are the key physical and human features there?

**How?** How would you get there and what reasons might you give for the type/s of transport you might use? Is your chosen place a short walk away or somewhere that would require transport to take you beyond the UK.

**Why?** What makes your chosen place geographically interesting, important or meaningful to you?



Entries should be handed in to your class teacher by

**1pm on Friday 28th March**

Prize winners will be announced during assembly the following week

*Good luck- we can't wait to see your thoughts for an amazing place to visit*

# DATES FOR YOUR DIARY

EVENT	DATE
Reception Hearing Screening	Monday 10 <sup>th</sup> March
Parents Evening Appointments Go Live	Monday 10 <sup>th</sup> March – 6pm
<b>– Year 3 only –</b> St Peter's PTA non uniform day	Thursday 13 <sup>th</sup> March – <b>Year 3 only</b> – please bring Mother's Day gift donations
St Peter's PTA non uniform day	Friday 14 <sup>th</sup> March - please bring Mother's Day gift donations
Y3 Trip to Manchester Museum	Friday 14 <sup>th</sup> March
Y6 Parents SATs Meeting	Monday 17 <sup>th</sup> March –after school in Y6 classroom
Reception – Aqualease Visit	Thursday 20 <sup>th</sup> March
St Peter's PTA Mother's Day Shop	Friday 21 <sup>st</sup> March
PTA Easter Raffle Tickets – sent home	Monday 24 <sup>th</sup> March
Y6 Trip to Tatton Hall	Friday 28 <sup>th</sup> March
Parents Evening Appointments Close	Friday 28 <sup>th</sup> March - 4pm
Geography Poster – closing date	Friday 28 <sup>th</sup> March
Rocksteady Concert	Monday 31 <sup>st</sup> March – 2pm
Parents Evening – not Year 3	Monday 31 <sup>st</sup> March - information sent via School Spider
Parents Evening – all years	Tuesday 1 <sup>st</sup> April - information sent via School Spider
Parents Evening – Year 3 only	Wednesday 2 <sup>nd</sup> April - information sent via School Spider
Y5 Easter Journey	Wednesday 2 <sup>nd</sup> April
PTA Easter Raffle Tickets – draw	Friday 4 <sup>th</sup> April
Last Day of Term	Friday 4 <sup>th</sup> April





## THE RAINBOW TEAM



# The Rainbow Team

**Safeguarding Nurture Wellbeing Behaviour**

**When the rainbow appears in the clouds, I will see it and remember the everlasting covenant between me and all living beings on Earth.**

**Genesis 9:16**



*Mrs Colley: RainbowTeam Lead*

Mrs Colley:	Senior Mental Health Lead Behaviour Lead Designated Safeguarding Lead
Mrs Vinyard:	SENCO
Mrs Harrison:	EYFS / KS1 Deputy Safeguarding Lead
Mrs Davidson:	Pastoral / Nurture

### *Our Early Help approach*

**If you feel your child could benefit from some pastoral support, do not hesitate to contact us.**

Our Senior Mental Health Lead ensures that all our pupils who require pastoral care for issues such as bereavement, friendship issues, home issues and anxiety, receive time each week with our pastoral staff who offer over 8 hours of individual and small group sessions.

If you feel that your child could benefit from this offer, please contact Mrs Colley.

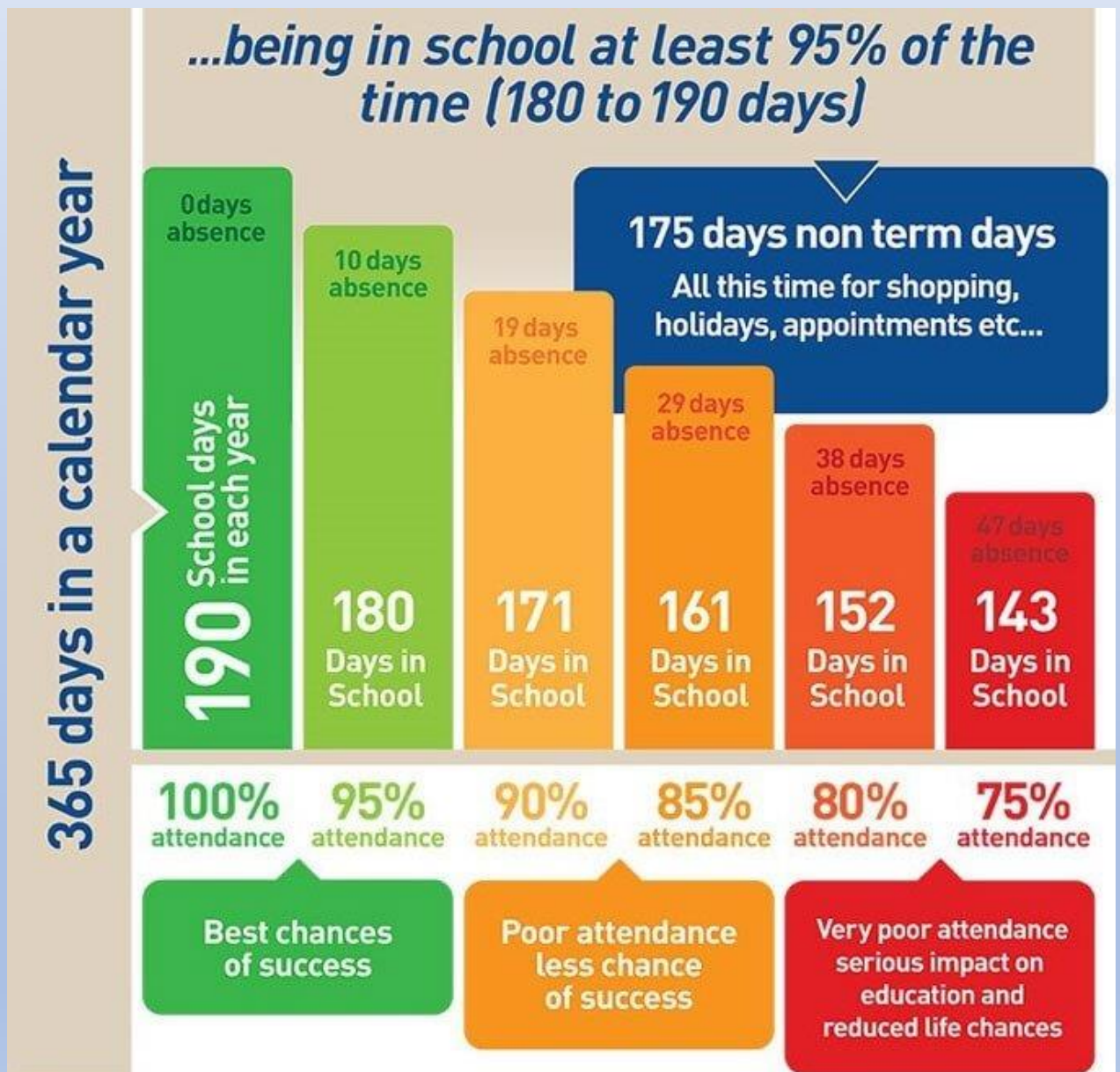
The team has regular meeting to discuss and measure the progress of pupils who fall into specific categories, including attendance, wellbeing issues, SEN, behavioural issues and safeguarding.



# Attendance

Whole School Target: 98%

Current Average Whole School Attendance: **97.5%**



## OFFICE NEWS



### DINNER MONEY

If your child wishes to change their lunch preference please advise the office via email giving **a week's notice**. Payment is taken through the School Money Online Payment System, please email [stpeter@sthelens.org.uk](mailto:stpeter@sthelens.org.uk) if you are having issues accessing the system.

### UNIFORM

Uniform can be ordered direct from Touchline UK Liverpool Rd, Warrington, WA5 1AE, 01925 413777

[sales@touchline-embroidery.com](mailto:sales@touchline-embroidery.com)

We also have a small number of items on the School Money site under SHOP which you can pay for then contact school to arrange for them to be sent home with your child.

### ABSENCE

**When reporting on the absence line, can we politely request that you leave a brief description of your child's illness rather than just saying they are unwell.** If your child has vomiting or diarrhoea please note that they should not return to school for a period of 48 hours after the last incident. This is a local authority policy

Applications for Holiday Leave must be submitted to school at **least 4 weeks** in advance. Forms can be found on the school website or requested from the school office. In accordance with Government and Local Authority policy, holidays taken during term time will only be authorised in **exceptional circumstances**.

### CHANGES

It is very important that if you change contact numbers, emails or addresses that you advise us as soon as possible. Any changes must be sent into school via email.

*Thank you*

## Contact Details

St Peter's C.E. Primary School  
Birley Street  
Newton-le-Willows  
WA12 9UR  
01744 678630  
[stpeter@sthelens.org.uk](mailto:stpeter@sthelens.org.uk)  
<https://twitter.com/NLWStPeters>  
[www.st-peters.st-helens.sch.uk](http://www.st-peters.st-helens.sch.uk)







# Mother's Day Shop!

*After the success of last year, we are hosting another Mother's Day Shop!*

*We would like to request donations for Mother's Day gifts to be sold ranging from £1-£5*

*Unfortunately we are unable to accept and sell alcohol products at the Mother's Day Shop*

## DONATIONS AND NON-UNIFORM DAY

**YEAR 3 ONLY - THURSDAY 13TH MARCH**  
**REST OF SCHOOL - FRIDAY 14TH MARCH**

## SHOP

**FRIDAY 21ST MARCH**

*The Mother's Day shop will be held during school time and each child will have the chance to come and buy something*

# HAPPY Holi

festival of colours

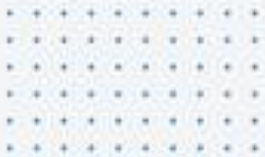
Friday 14th March

**Chicken & Sweet Potato Curry  
(Vegetarian option available)**

**Vegetable Rice & Sweetcorn**

**Ice-cream with Mango & Sauce**





The PTA are  
on




# Social Media

A collection of light blue, rounded square shapes scattered around the word 'Media'.

Facebook: *St-Peters Pta*

Instagram: *stpeters\_pta\_nlw*



Please send us a request to keep up  
to date with news/events/reminders!