



**ST PETER'S**  
C.E. Primary School



# The Keys Newsletter

**10<sup>th</sup> January 2025**

Dear Parent / Carer,

I hope you all had a lovely Christmas and a wonderful start to the new year. On behalf of all the staff, I'd like to wish you a very Happy New Year!

We've had an interesting start to the term with the snow and ice, but I'd like to extend a big thank you to Mr. Parfrey for working tirelessly over the weekend and early each morning to ensure the school was safe and accessible for everyone.

We're excited about the term ahead and all the opportunities that 2025 will bring. Thank you, as always, for your continued support, and we look forward to another fantastic year at St. Peter's.

Warm regards,

Mr Robinson  
Head Teacher



## **GROWTH MINDSET**

## **STAR OF THE WEEK**

**Sophia M – Reception**  
**Alfie – Year 1**  
**Ava – Year 2**  
**Zachary - Year 3**  
**Jessica – Year 4**  
**Charlotte – Year 5**  
**Emilia G – Year 6**

**Grace H-S - Reception**  
**Isla - Year 1**  
**Penny – Year 2**  
**Gracie – Year 3**  
**Callen – Year 4**  
**Charlie C – Year 5**  
**Eleanor – Year 6**



## **VALUES**

**Arthur R – Love – Year 1**  
**Jack - Faith - Year 3**  
**Micah - Love – Year 5**

# DATES FOR YOUR DIARY

EVENT	DATE
Y5 Crucial Crew Trip	Tuesday 28 <sup>th</sup> January 2025
Y6 Young Voices @Co-op Arena	Thursday 6 <sup>th</sup> February 2025



## KEY STAGE 2 LIBRARY DAYS

Key Stage 2 class library day will change from next week.

The new schedule will be:

Monday Y6  
Tuesday Y5  
Wednesday Y4  
Thursday Y3



# SUPERSTARS

## AFTER SCHOOL CLUBS

MONDAY		
Multi sports (Superstars)	Year 5 and Year 6	3.30 – 4.30pm
TUESDAY		
Multi sports (Superstars)	Year 3	3.30 – 4.30pm
Lego Club	Year 1, 2, 3 & 4	3.30 – 4.30pm
WEDNESDAY		
Multi sports (Superstars)	Year 2	3.20 – 4.15pm
Eco Club	Year 6	3.30 – 4.30 pm – <b>Start date TBC</b>
THURSDAY		
Multi sports (Superstars)	Year 1	3.20 – 4.15pm
Kidslingo	Year 1, 2 & 3	3.30 - 4.30pm
FRIDAY		
Multi sports (Superstars)	Year 4	3.15 – 4.15pm
CREST Club	Year 5 and Year 6	3.30 – 4.30 pm



*Please note some of these dates may be subject to change.*



## THE RAINBOW TEAM



# The Rainbow Team

**Safeguarding Nurture Wellbeing Behaviour**

**When the rainbow appears in the clouds, I will see it and remember the everlasting covenant between me and all living beings on Earth.**

**Genesis 9:16**



*Mrs Colley: RainbowTeam Lead*

Mrs Colley:	Senior Mental Health Lead Behaviour Lead Designated Safeguarding Lead
Mrs Vinyard:	SENCO
Mrs Harrison:	EYFS / KS1 Deputy Safeguarding Lead
Mrs Davidson:	Pastoral / Nurture

### *Our Early Help approach*

**If you feel your child could benefit from some pastoral support,  
do not hesitate to contact us.**

Our Senior Mental Health Lead ensures that all our pupils who require pastoral care for issues such as bereavement, friendship issues, home issues and anxiety, receive time each week with our pastoral staff who offer over 8 hours of individual and small group sessions.

If you feel that your child could benefit from this offer, please contact Mrs Colley.

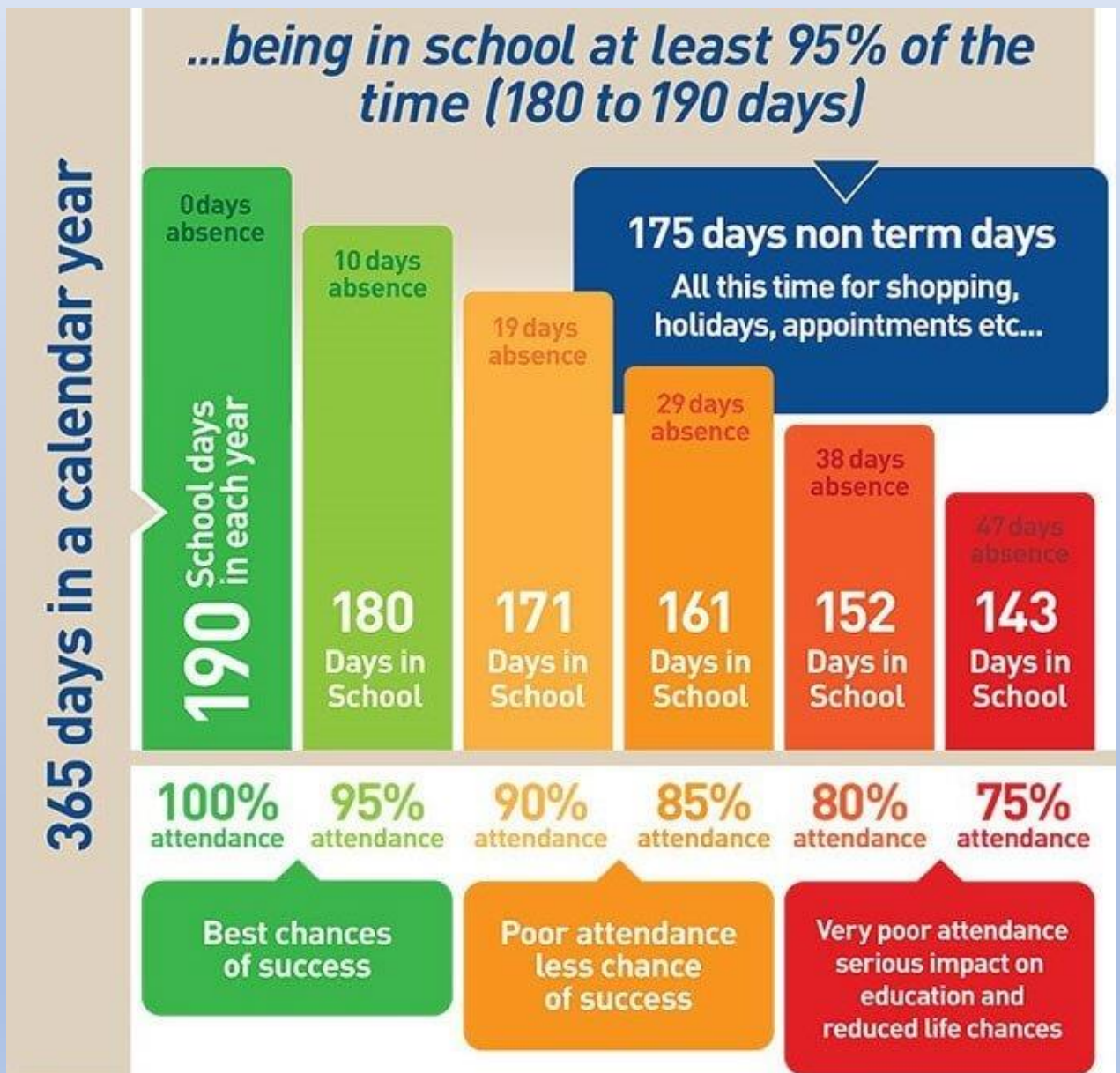
The team has regular meeting to discuss and measure the progress of pupils who fall into specific categories, including attendance, wellbeing issues, SEN, behavioural issues and safeguarding.



# Attendance

Whole School Target: 98%

Current Average Whole School Attendance: **97.9%**



An open space

to  
unpack  
life's

big  
questions

For anyone  
who's



# curious

about faith

**Unpack the  
Christian faith  
together.**



Meet new people and explore the Christian faith together. Alpha is for anyone who's curious. No judgement, no pressure. Each session unpacks a big question of life, faith, and purpose, and is designed to spark conversation. Come along, see what you think.

**Verona Kitchen & Bar**  
**51 High St, Newton-le-Willows**

Tuesday evenings at 7pm

From 14th January 2025

Call/Text Mark on 07905 995464



St.Helens



Supporting families of SEND

# SEND

# Drop In

Supporting parents and carers who  
have children and young people with  
SEN/Disabilities

Come along and receive advice and  
support from the IASS team - no  
appointment needed

**Starting from**

**Thursday 16th January 2025**

Thursdays (term time only)

From 9am - 11:30am

at

Wargrave C of E Primary School

Bradlegh Road

Newton-Le-Willows

WA12 8QL



## OFFICE NEWS



### DINNER MONEY

If your child wishes to change their lunch preference please advise the office via email giving **a week's notice**. Payment is taken through the School Money Online Payment System, please email [stpeter@sthelens.org.uk](mailto:stpeter@sthelens.org.uk) if you are having issues accessing the system.

### UNIFORM

Uniform can be ordered direct from Touchline UK Liverpool Rd, Warrington, WA5 1AE, 01925 413777

[sales@touchline-embroidery.com](mailto:sales@touchline-embroidery.com)

We also have a small number of items on the School Money site under SHOP which you can pay for then contact school to arrange for them to be sent home with your child.

### ABSENCE

**When reporting on the absence line, can we politely request that you leave a brief description of your child's illness rather than just saying they are unwell.** If your child has vomiting or diarrhoea please note that they should not return to school for a period of 48 hours after the last incident. This is a local authority policy

Applications for Holiday Leave must be submitted to school at **least 4 weeks** in advance. Forms can be found on the school website or requested from the school office. In accordance with Government and Local Authority policy, holidays taken during term time will only be authorised in **exceptional circumstances**.

### CHANGES

It is very important that if you change contact numbers, emails or addresses that you advise us as soon as possible. Any changes must be sent into school via email.

*Thank you*

## Contact Details

St Peter's C.E. Primary School  
Birley Street  
Newton-le-Willows  
WA12 9UR  
01744 678630  
[stpeter@sthelens.org.uk](mailto:stpeter@sthelens.org.uk)  
<https://twitter.com/NLWStPeters>  
[www.st-peters.st-helens.sch.uk](http://www.st-peters.st-helens.sch.uk)

