



**ST PETER'S**  
C.E. Primary School



# The Keys Newsletter

**6<sup>th</sup> December 2024**

Dear Parents and Carers,

You couldn't have missed our upcoming coffee morning, taking place next Wednesday at 9:30 AM. This event is open to all parents and will focus on Special Education Needs (SEN).

This is a wonderful opportunity to meet our SENCo, Mrs. Vinyard, and to speak with various agencies who will be present to answer any of your questions. There will also be several informative presentations, including one from Hope Academy, detailing their work with SEND and the transition to high school.

To help us prepare, please complete the provided links or email the school to confirm your attendance. We welcome more than one member from each family to join us.

We look forward to seeing you.

Mr Robinson  
Head Teacher



ONE SMALL  
POSITIVE  
THOUGHT  
IN THE MORNING  
CAN CHANGE  
YOUR WHOLE DAY



St Peter's C.E.  
Primary School

# Coffee Morning

## Special Education Needs and Disabilities

We are hosting a coffee morning for parents and carers who would like an informal opportunity to speak with staff, agencies and other parents/carers about Special Educational Needs. There will be a number of presentations and talks from a variety of agencies that we work with. Currently attending will be:

- Occupational Therapy Service (OT)
- The School Nurse from School Health
- Hope Academy SENDCo – transition from primary to secondary.

**Date: Wednesday 11<sup>th</sup> December 2024**

**Time: 9.30am**

<https://forms.office.com/e/rPdPHmp84K>

SEND Coffee Morning. Wednesday  
11th December 2024





Mr Robinson and Mr Badley were delighted to attend the launch of Counting Christmas Trees, written by Brian Agger and illustrated by Rachel Sutherland.

With a percentage of the proceeds being donated to St Peters, the book can be bought from Jasmine's Gifts on the High Street and online.



The school is now feeling very festive!





Wednesday 28th November was No Pens Day- raising awareness for Speech and Language UK and empathising with the millions of children nationwide that struggle to communicate.

All writing implements were banned, in place of activities and lessons that required the children to communicate in other ways.

One activity we all joined in with was the Biggest Ever Show and Tell: it was amazing to see and hear about all the special things that our children brought in to share with us.

Despite the fun, we also spent some time thinking about the struggles that some children face when they come to school, and how we can adapt our classrooms to make them more inclusive.



## Eco Club news....

Each week, our Eco Club reviews the wildlife camera images and videos positioned at our Eco Hub. We've spotted tell-tale signs of our resident fox, but until recently, we never had a clear picture. That changed when one of our eagle-eyed eco warriors discovered this video image while documenting our wildlife sightings. The fox is definitely living nearby, and we hope to capture a clearer image soon. This has been a fantastic learning experience for our pupils.



### Appointments During School Hours:

We are receiving notifications of medical and dental appointments on the day, which is absolutely fine for emergency appointments, but for those scheduled in advance, could we please ask for a minimum 7 days notice via email with a copy of the appointment letter attached.

Please send all emails to the school office [stpeter@sthelens.org.uk](mailto:stpeter@sthelens.org.uk) and we will advise the class teachers accordingly.

### Absence Notifications:

Could we please remind you to notify us of any absences due to illness via telephone. The absence line is an option when you ring the school (01744 678 630) and messages should be left before registration at 8.55am.

A message should be left on each day your child is absent. If an email is sent rather than a message on the absence line, we do need to follow-up with a telephone call.



## GROWTH MINDSET

Nina – Reception  
Kitty – Year 1  
Charlotte – Year 2  
Jack - Year 3  
Roisin – Year 4  
Noah – Year 5  
Isla – Year 6



## STAR OF THE WEEK

Chantelle - Reception  
Sarah – Year 1  
Eddie – Year 2  
Noah – Year 3  
Jessica – Year 4  
Emily – Year 5  
Heidi – Year 6



This week's Courage certificate is for the Arts:

Elsie – Reception  
Isla – Year 1  
Greyson – Year 2  
Faye - Year 3  
Henry – Year 4  
Alanna - Year 5  
Sophie Ed – Year 6



## VALUES

Phoebe – Reception  
Zachary - Year 1  
Dexter – Year 3  
Cece – Year 4  
Iona – Year 5  
Amelia H – Year 6



# DATES FOR YOUR DIARY

EVENT	DATE
Rocksteady Concert (invitations sent directly by the Rocksteady Team)	Monday 9 <sup>th</sup> December
Robin Hood Pantomime – in school for all classes	Tuesday 10 <sup>th</sup> December
SEND Coffee Morning	Wednesday 11 <sup>th</sup> December
Library Christmas Sing	Thursday 12 <sup>th</sup> December
Wear a Christmas item day	Friday 13 <sup>th</sup> December
Christmas Craft Day	Friday 13 <sup>th</sup> December
Christmas Dinner	Friday 13 <sup>th</sup> December
St Peter's PTA - Sip & Paint Event	Saturday 14 <sup>th</sup> December
Last day of term – Breakfast with Santa & Christmas Parties	Friday 20 <sup>th</sup> December



## NATIVITY AND CAROL CONCERT

Reception and Key Stage 1 Nativity	Wednesday 18 <sup>th</sup> December – 2pm <i>St Peter's PTA serving refreshments from 1.45pm</i>
Reception and Key Stage 1 Nativity	Thursday 19 <sup>th</sup> December – 9.30am <i>St Peter's PTA serving refreshments from 9.15am</i>
Key Stage 2 Carol Service – In church	Thursday 19 <sup>th</sup> December – 1.45pm <i>St Peter's PTA serving refreshments from 1.30pm</i>

Families will be issued one ticket for each nativity performance



## THE RAINBOW TEAM



# The Rainbow Team

**Safeguarding Nurture Wellbeing Behaviour**

**When the rainbow appears in the clouds, I will see it and remember the everlasting covenant between me and all living beings on Earth.**

**Genesis 9:16**



*Mrs Colley: RainbowTeam Lead*

Mrs Colley:	Senior Mental Health Lead Behaviour Lead Designated Safeguarding Lead
Mrs Vinyard:	SENCO
Mrs Harrison:	EYFS / KS1 Deputy Safeguarding Lead
Mrs Davidson:	Pastoral / Nurture

### *Our Early Help approach*

**If you feel your child could benefit from some pastoral support,  
do not hesitate to contact us.**

Our Senior Mental Health Lead ensures that all our pupils who require pastoral care for issues such as bereavement, friendship issues, home issues and anxiety, receive time each week with our pastoral staff who offer over 8 hours of individual and small group sessions.

If you feel that your child could benefit from this offer, please contact Mrs Colley.

The team has regular meeting to discuss and measure the progress of pupils who fall into specific categories, including attendance, wellbeing issues, SEN, behavioural issues and safeguarding.

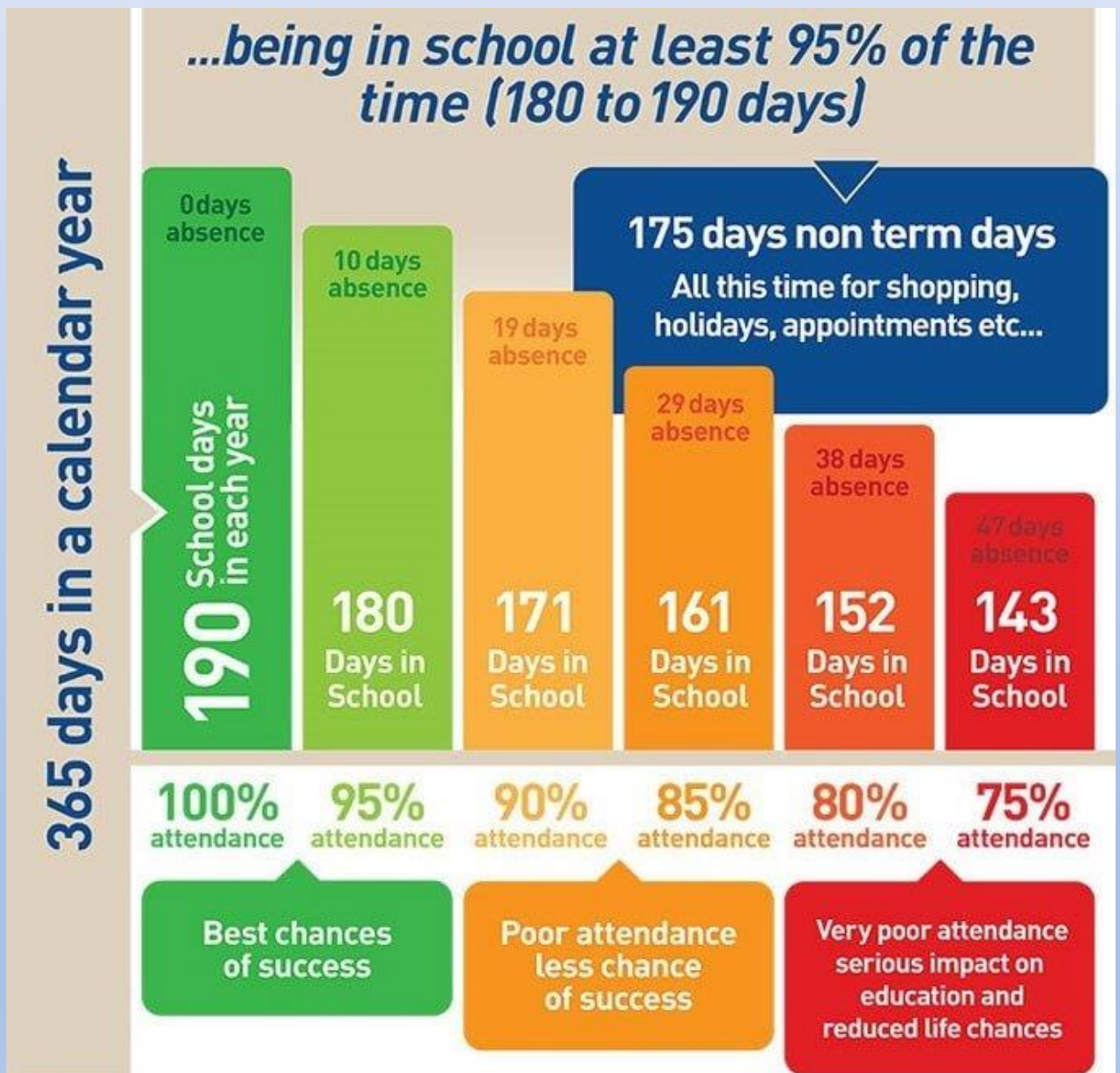




# Attendance

Whole School Target: 98%

Current Average Whole School Attendance: **97.8%**



# ST PETER'S CHURCH CHOIR

## OPEN REHEARSAL



We are looking for new choir members to join our established and talented group of singers at St Peter's Church. You are invited, to join us for an open rehearsal on **Friday 6<sup>th</sup> December at St Peter's Church at 7pm.**

This is open to any child in Y3 upwards and any adults who'd like to join. No previous singing experience required. No fees to join the choir, and no obligation to attend every Sunday morning service. Any time you can offer is much appreciated.

What we can offer you:

- + Learn or develop a skill in corporate singing.
- + A sense of community and comradery with people of all ages.
- + A rich tradition of Christian hymns and worship music.
- + A programme of social events throughout the year.

If you have any questions, please get in touch with Rev James either by email: [revjrtaylor@yahoo.com](mailto:revjrtaylor@yahoo.com) or phone/text 07341940975

We look forward to welcoming you.



# St. Peter's Church

Church Street, Newton le Willows, WA12 9SR

Charity Number: 1133794

## Carols, Mince Pies & Mulled Wine

**Wednesday 11th December 2024**

**7:30 pm in Church (doors open 7pm)**

*Roberts Bakery*  
*Championship Brass Band*

and

*Manchester Scots Pipers*

**Admission £10 (including refreshments)**

Tickets can be bought on the door by cash only please



# Paint and Sip

**14TH DEC | 6-8 PM | £25PP**

Join us as we transform our school hall into your very own art studio! Hosted by Rebecca Fuller of Brushes Artistry, our PTA is creating a 'Paint and Sip' night for you to enjoy with friends of our school. All over 18's welcome!

Tickets available at [pta-events.co.uk](http://pta-events.co.uk)

Doors open 5:45pm



**Ticket includes:**  
Arrival drink  
Mince pie  
All materials



**Recreate your own  
painted canvas!**



**There will be a bar serving alcoholic drinks, soft drinks and snacks so get together with your friends and family and make a night of it!**

St.Helens



Supporting families of SEND

# SEND

# Drop In

Supporting parents and carers who  
have children and young people with  
SEN/Disabilities

Come along and receive advice and  
support from the IASS team - no  
appointment needed

**Starting from**

**Thursday 16th January 2025**

Thursdays (term time only)

From 9am - 11:30am

at

Wargrave C of E Primary School

Bradlegh Road

Newton-Le-Willows

WA12 8QL

## OFFICE NEWS



### DINNER MONEY

If your child wishes to change their lunch preference please advise the office via email giving **a week's notice**. Payment is taken through the School Money Online Payment System, please email [stpeter@sthelens.org.uk](mailto:stpeter@sthelens.org.uk) if you are having issues accessing the system.

### UNIFORM

Uniform can be ordered direct from Touchline UK Liverpool Rd, Warrington, WA5 1AE, 01925 413777

[sales@touchline-embroidery.com](mailto:sales@touchline-embroidery.com)

We also have a small number of items on the School Money site under SHOP which you can pay for then contact school to arrange for them to be sent home with your child.

### ABSENCE

**When reporting on the absence line, can we politely request that you leave a brief description of your child's illness rather than just saying they are unwell.** If your child has vomiting or diarrhoea please note that they should not return to school for a period of 48 hours after the last incident. This is a local authority policy

Applications for Holiday Leave must be submitted to school at **least 4 weeks** in advance. Forms can be found on the school website or requested from the school office. In accordance with Government and Local Authority policy, holidays taken during term time will only be authorised in **exceptional circumstances**.

### CHANGES

It is very important that if you change contact numbers, emails or addresses that you advise us as soon as possible. Any changes must be sent into school via email.

*Thank you*

## Contact Details

St Peter's C.E. Primary School  
Birley Street  
Newton-le-Willows  
WA12 9UR  
01744 678630  
[stpeter@sthelens.org.uk](mailto:stpeter@sthelens.org.uk)  
<https://twitter.com/NLWStPeters>  
[www.st-peters.st-helens.sch.uk](http://www.st-peters.st-helens.sch.uk)

