



ST PETER'S
C.E. Primary School



The Keys Newsletter

22nd November 2024

Dear Parents and Carers,

It has been an exciting week filled with enriching Educational Visits for our pupils. Year 5 enjoyed a fascinating trip to Jodrell Bank in Cheshire, exploring the wonders of space and science. Meanwhile, Year 2 had a double treat: first attending the Into Film Festival and then visiting the Veolia Recycling Centre to learn about sustainability and waste management.

We strive to ensure that all our Educational Visits complement and enhance the curriculum, grounding students' learning in real-world experiences. You won't find us planning trips to places like Alton Towers, as they do not align with our educational objectives (though I'm sure the children might disagree!).

On our school website, you'll find a provisional list of school visits planned for the year. Please note that these are subject to change. Pricing these visits remains a challenge due to the rising costs of transport and venues. We deeply appreciate your ongoing support, which makes these opportunities possible for the children.

At the start of the school year, I wrote to you about the new legislation around holidays during term time. As part of local authority guidelines, we are now required to investigate absences that fall around holiday periods, including absences either side of half term, to ensure there is no attempt to bypass fixed penalty notices. This may involve home visits or requests for proof of holiday periods, such as boarding passes. While this is not something we particularly want or enjoy doing, it is a responsibility that has been handed down to schools as part of new regulations.

Thank you for your understanding and cooperation as we navigate these requirements together.

Wishing you a lovely weekend,

Mr. Robinson



GROWTH MINDSET

Joanna – Reception
Jack W – Year 1
Hollie – Year 2
Lucinda - Year 3
Erin – Year 4
Ella – Year 5
Bethan – Year 6



STAR OF THE WEEK

Remy - Reception
Max – Year 1
Beau – Year 2
Ezra – Year 3
Rebekah – Year 4
Ava – Year 5
Joseph – Year 6



This week's Courage certificate is for
Understanding the World:

Katie - Year 2
Imogen - Year 3
James - Year 4
Zoe - Year 5
Beren - Year 6



VALUES

Grace H-S – Love - Reception
Leo H-S – Love - Year 1
Hannah – Love - Year 3
Mia – Respect - Year 4
Audrey – Love - Year 5



DATES FOR YOUR DIARY

EVENT	DATE
St Peter's Church Christmas Fair	Saturday 23 rd November
Reception – Trip to Croxteth Hall Farm	Tuesday 26 th November
Reception Intake 2025 Open Evening	Wednesday 27 th November
Year 1, 2 & 3 – Film Night	Thursday 28 th November
Year 2 – Christmas Journey at All Saints Church	Thursday 5 th December
Year 4, 5 & 6 – Film Night	Thursday 5 th December
Robin Hood Pantomime – in school for all classes	Tuesday 10 th December
SEND Coffee Morning	Wednesday 11 th December
Wear a Christmas item day	Friday 13 th December
Christmas Craft Day	Friday 13 th December
Christmas Dinner	Friday 13 th December
Last day of term – Breakfast with Santa	Friday 20 th December



NATIVITY AND CAROL CONCERT

Key Stage 2 Carol Service – In church	Date and time to be confirmed....
Reception and Key Stage 1 Nativity	Afternoon Performance: Wednesday 18th December
Reception and Key Stage 1 Nativity	Morning Performance: Thursday 19 th December

Families will be issued one ticket for each nativity performance



THE RAINBOW TEAM



The Rainbow Team

Safeguarding Nurture Wellbeing Behaviour

When the rainbow appears in the clouds, I will see it and remember the everlasting covenant between me and all living beings on Earth.

Genesis 9:16



Mrs Colley: RainbowTeam Lead

Mrs Colley:	Senior Mental Health Lead Behaviour Lead Designated Safeguarding Lead
Mrs Vinyard:	SENCO
Mrs Harrison:	EYFS / KS1 Deputy Safeguarding Lead
Mrs Davidson:	Pastoral / Nurture

Our Early Help approach

**If you feel your child could benefit from some pastoral support,
do not hesitate to contact us.**

Our Senior Mental Health Lead ensures that all our pupils who require pastoral care for issues such as bereavement, friendship issues, home issues and anxiety, receive time each week with our pastoral staff who offer over 8 hours of individual and small group sessions.

If you feel that your child could benefit from this offer, please contact Mrs Colley.

The team has regular meeting to discuss and measure the progress of pupils who fall into specific categories, including attendance, wellbeing issues, SEN, behavioural issues and safeguarding.



SUPERSTARS

AFTER SCHOOL CLUBS

MONDAY		
Multi sports (Superstars)	Year 5 and Year 6	3.30 – 4.30pm
TUESDAY		
Multi sports (Superstars)	Year 3	3.30 – 4.30pm
Lego Club	Year 1, 2, 3 & 4	3.30 – 4.30pm
WEDNESDAY		
Multi sports (Superstars)	Year 2	3.20 – 4.15pm
Eco Club	Year 6	3.30 – 4.30 pm
THURSDAY		
Multi sports (Superstars)	Year 1	3.20 – 4.15pm
Kidslingo	Year 1, 2 & 3	3.30 - 4.30pm
FRIDAY		
Multi sports (Superstars)	Year 4	3.15 – 4.15pm

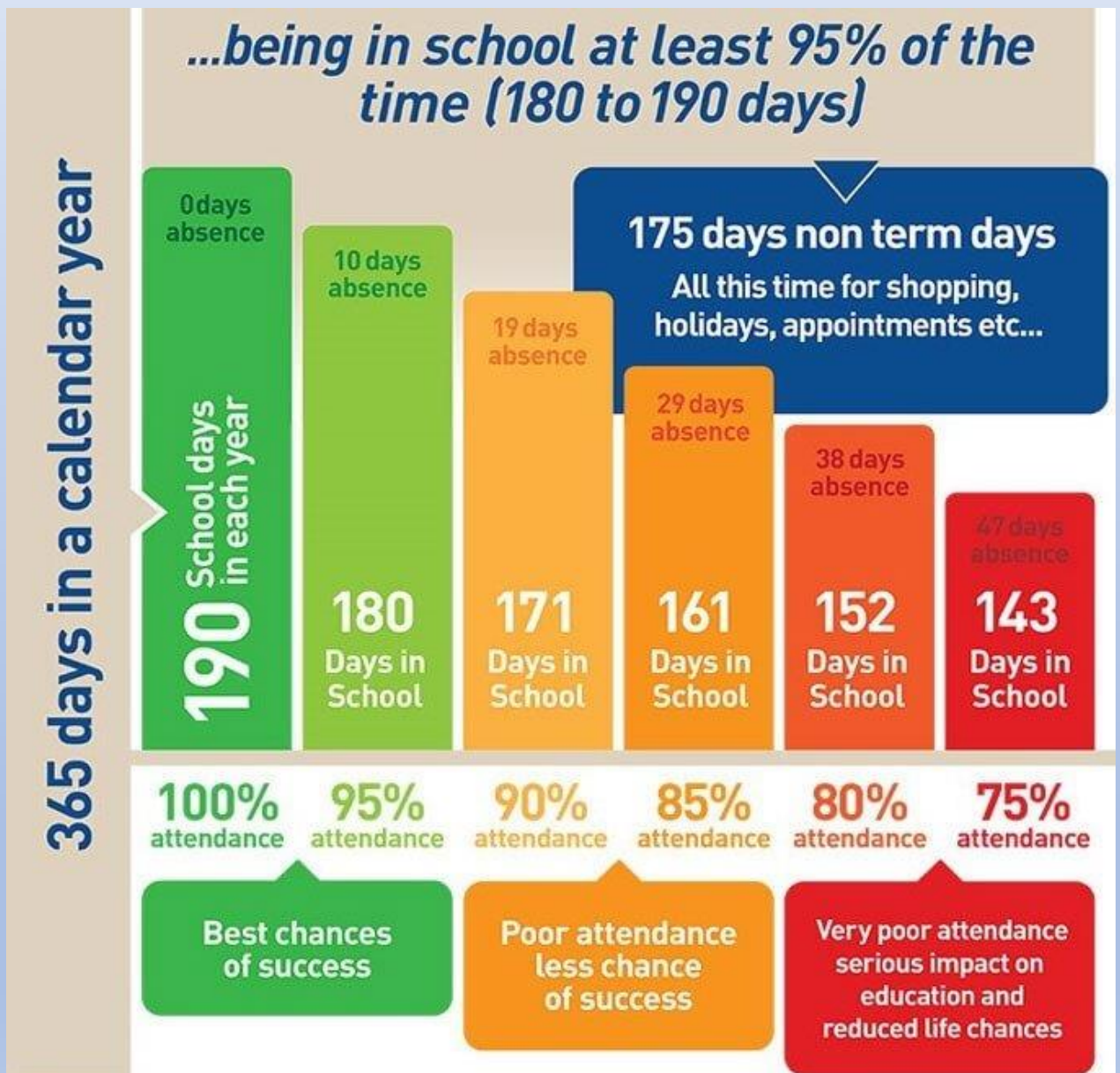


Please note some of these dates may be subject to change.

Attendance

Whole School Target: 98%

Current Average Whole School Attendance: 98%



St Peter's Church Christmas Fair

Saturday 23rd November

11.00am – 3.00pm



Local Crafters

plus

Tombolas

Santa's Grotto

Home Made Cakes

Refreshments

Raffle



Games



ONE SMALL
POSITIVE
THOUGHT
IN THE MORNING
CAN CHANGE
YOUR WHOLE DAY



St Peter's C.E.
Primary School

Coffee Morning

Special Education Needs and Disabilities

We are hosting a coffee morning for parents and carers who would like an informal opportunity to speak with staff, agencies and other parents/carers about Special Educational Needs. There will be a number of presentations and talks from a variety of agencies that we work with. Currently attending will be:

- Occupational Therapy Service (OT)
- The School Nurse from School Health
- Hope Academy SENDCo – transition from primary to secondary.

Date: Wednesday 11th December 2024

Time: 9.30am

<https://forms.office.com/e/rPdPHmp84K>

SEND Coffee Morning, Wednesday
11th December 2024





Paint and Sip

14TH DEC | 6-8 PM | £25PP

Join us as we transform our school hall into your very own art studio! Hosted by Rebecca Fuller of Brushes Artistry, our PTA is creating a 'Paint and Sip' night for you to enjoy with friends of our school. All over 18's welcome!

Tickets available at pta-events.co.uk

Doors open 5:45pm



Ticket includes:
Arrival drink
Mince pie
All materials



**Recreate your own
painted canvas!**



There will be a bar serving alcoholic drinks, soft drinks and snacks so get together with your friends and family and make a night of it!

St.Helens



Supporting families of SEND

SEND

Drop In

Supporting parents and carers who
have children and young people with
SEN/Disabilities

Come along and receive advice and
support from the IASS team - no
appointment needed

Starting from

Thursday 16th January 2025

Thursdays (term time only)

From 9am - 11:30am

at

Wargrave C of E Primary School

Bradlegh Road

Newton-Le-Willows

WA12 8QL

OFFICE NEWS



DINNER MONEY

If your child wishes to change their lunch preference please advise the office via email giving **a week's notice**. Payment is taken through the School Money Online Payment System, please email stpeter@sthelens.org.uk if you are having issues accessing the system.

UNIFORM

Uniform can be ordered direct from Touchline UK Liverpool Rd, Warrington, WA5 1AE, 01925 413777

sales@touchline-embroidery.com

We also have a small number of items on the School Money site under SHOP which you can pay for then contact school to arrange for them to be sent home with your child.

ABSENCE

When reporting on the absence line, can we politely request that you leave a brief description of your child's illness rather than just saying they are unwell. If your child has vomiting or diarrhoea please note that they should not return to school for a period of 48 hours after the last incident. This is a local authority policy

Applications for Holiday Leave must be submitted to school at **least 4 weeks** in advance. Forms can be found on the school website or requested from the school office. In accordance with Government and Local Authority policy, holidays taken during term time will only be authorised in **exceptional circumstances**.

CHANGES

It is very important that if you change contact numbers, emails or addresses that you advise us as soon as possible. Any changes must be sent into school via email.

Thank you

Contact Details

St Peter's C.E. Primary School
Birley Street
Newton-le-Willows
WA12 9UR
01744 678630
stpeter@sthelens.org.uk
<https://twitter.com/NLWStPeters>
www.st-peters.st-helens.sch.uk

