



**ST PETER'S**  
C.E. Primary School



# The Keys Newsletter

**27<sup>th</sup> September 2024**

Dear Parent / Carer,

I am delighted to inform you that we have been Awarded the Primary Science Quality (GILT) Mark. A few years back the school was awarded the Primary Science Quality Mark for excellence in science leadership, teaching and learning. The Gilt award is a step above this.

The PSQM is led by the University of Hertfordshire in collaboration with the Primary Science Teacher Trust.

*Helen Sizer, PSQM Director said: "By enabling effective science leadership, PSQM is powering the potential of all children to see the relevance and importance of science in their lives, now and in the future. Schools that have achieved a Primary Science Quality Mark have demonstrated a significant commitment to science leadership, teaching and learning and the profile and quality of science in each accredited school is very high. Science subject leaders, their colleagues, headteachers, children, parents and governors should be very proud."*

As always, St Peters likes to go one step above, and we are very proud that we could achieve the prestigious GILT award. A huge thank you to Mr Badley who has expertly led on this and delivered outstanding science opportunities for the whole school.

Have a lovely weekend

Mr Robinson





## GROWTH MINDSET

Tadhg – Reception  
Jude – Year 1  
Noah – Year 2  
Oskar -Year 3  
Freddie – Year 4  
Samuel F – Year 5  
Seth – Year 6



## STAR OF THE WEEK

George - Reception  
Leo B – Year 1  
Greyson – Year 2  
Ananda – Year 3  
Oliver – Year 4  
Harry – Year 5  
Tilly – Year 6



This weeks certificate  
was for Understanding  
the World:

Charlotte – Year 2  
Rebekah – Year 4  
Emily – Year 5



## VALUES

Y1 - Billie Wilding - Faith  
Y2 - Leo Linderman - Persistence  
Y3 - Joseph Damn - Love  
Y4 - Rebekah Shepard - Trust  
Y5 - Ethan Crowder - Love



# PSQM PRESS RELEASE SEPTEMBER 2024

## St Peter's C.E Primary School Awarded Primary Science Quality Mark

Primary Science Quality Marks have been awarded to over 300 nursery, infant, junior, primary, middle, international and special schools this month to celebrate their commitment to excellence in science leadership, teaching and learning. So far, since its national launch in 2010, more than 5000 Primary Science Quality Marks (PSQM) have been awarded, creating a solid foundation of quality science education for over 1,000,000 children.

PSQM is a comprehensive evidence-based professional development programme that effectively develops science leadership, ensuring teachers have the knowledge, capability and support they need to transform science education and shape future generations. The Primary Science Quality Mark is led by the University of Hertfordshire.

Helen Sizer, PSQM Co-Director said: 'By enabling effective science leadership, PSQM is powering the potential of all children to see the relevance and importance of science in their lives, now and in the future. Schools that have achieved a Primary Science Quality Mark have demonstrated a significant commitment to science leadership, teaching and learning and the profile and quality of science in each accredited school is very high. Science subject leaders, their colleagues, headteachers, children, parents and governors should be very proud.'

For more information, please contact: [PSQM@herts.ac.uk](mailto:PSQM@herts.ac.uk)





## HARVEST TIME

Next Wednesday, 2<sup>nd</sup> October, the school is holding a harvest festival on Wednesday during the St. Peter's Church service. All the children will be attending; however this is during a scheduled public service and not a specific school event.

Year 3 will be conducting a short Harvest performance and if parents of Year 3 would like to attend that is fine. The service will begin at 10am.

There will be a full harvest service in church on Sunday 13th October at 09:30 and 11am. The 11am is a family service.

Traditionally, we have donated to St.John's Food Bank around Harvest Time. If your family would like to donate this year, please bring in a non-perishable item into school on Wednesday 2<sup>nd</sup> October.



## CLASS WORSHIP

***'The child grew and became strong in body, mind and spirit'***

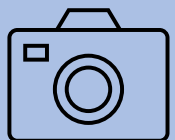
Every half term, each class will be holding a pupil-led in class worship.

Each class has been split into groups and most half terms, one of those groups will conduct a short worship in the classroom with the selected children's parents and the class.

All the children, over the year, will take part with their parents or carers being invited to watch.

## SCHOOL PHOTOGRAPHS

On Thursday 4th November we will be having our individual photographs during the morning.



Usually, the Year 1 children arrive to school in their P.E kits, however on this day we would like your children to arrive to school, in full school uniform. Please send their P.E kit so they can change in the afternoon, ready for their normal P.E lesson.



# NO PARKING HERE



**STOPPING HERE PUTS CHILDREN IN DANGER.**



**Is it illegal to park on zig-zag lines outside schools?**

Rule 243 of the Highway Code indicates a range of places where motorists must not park, including on a bend, a dropped kerb or the brow of a hill. It also states that drivers must not park near a school entrance. Parking outside a school specifically may obstruct visibility for parents and children trying to cross the road and is thus highly dangerous.

Parking seems to be an issue that is getting worse around St Peters recently. Parking on zig zag lines, stopping across the road opposite the gates (this has never been allowed) and parking on corners has become increasingly dangerous.

I have had emails from neighbours and parents who are concerned about safety and their own property.

A reminder that you can use the Church Car Park or Mesnes Car Park which has a walk shorter than the time it takes to find a parking space close to school. Neighbours have said they will be asking for a police patrol in the future.



Last academic year, our school community raised a whopping £1,530 for books for our school library! Keeping fresh, exciting, and current books ready and available for anyone to read and enjoy free of charge is so important to us, and we are so grateful for all the support you have given us.

This year, we are looking to increase our library stock with books suitable for our youngest readers, to ensure that all of our pupils can use and enjoy such a special place.

Our next Scholastic Book Fair will be held from Friday 4th October until Wednesday 9th October on the school playground. You will have the opportunity to browse and buy books before school and after school. Please bear in mind we are a cashless school and so purchases must be made using a card.

We have five £5 competition vouchers to hand out to children for use at the fair. If you would like to enter for the chance of winning one, we would like you to record a video message telling us what you love most about reading.

Please email entries to [david.badley@sthelens.org.uk](mailto:david.badley@sthelens.org.uk)





# Football teams

Well done to our Year 5 and Year 6 football teams who have played in St Helens Schools Tournaments over the last few weeks. They both did really well.

A special mention to Year 5 who came third. Congratulations

## DATES FOR YOUR DIARY

EVENT	DATE
Year 4 – Trip to Port Sunlight	Monday 30 <sup>th</sup> September
Reception Intake 2025 Open Evening	Monday 30 <sup>th</sup> September (fully booked)
Harvest Worship at St. Peter's Church	Wednesday 2 <sup>nd</sup> October – 10am
School Photographs	Thursday 3 <sup>rd</sup> October
National Poetry Day	Thursday 3 <sup>rd</sup> October
Reception Intake 2025 Open Evening	Monday 14 <sup>th</sup> October (fully booked)
Bags2School	Thursday 17 <sup>th</sup> October
St Peter's PTA AGM	Thursday 17 <sup>th</sup> October – 6.45pm
Last day of half term	Friday 25 <sup>th</sup> October
First day of term	Monday 4 <sup>th</sup> November
PTA Neon Disco (details to follow)	Thursday 7 <sup>th</sup> November
Reception Intake 2025 Open Evening	Wednesday 27 <sup>th</sup> November (please email <a href="mailto:stpeter@sthelens.org.uk">stpeter@sthelens.org.uk</a> to book)
Year 5 – Trip to Jodrell Bank	Thursday 21 <sup>st</sup> November



Free drop in  
**Science and Wonder**  
afternoon

**12noon to 4.30pm**  
**Saturday 28th September**

*Suitable for families (children of 5 years or older)*

Planetarium	Crafts
Science demos	Refreshments
Hands on experiments	

**at St Peters Church**  
Church St, Newton-le-Willows WA12 9SR. Find us on  
**facebook [St Peter's Church Newton le Willows](#)**

### Planetarium

Please note that the Planetarium will be giving shows at the following times:

12.15-12.40 show 1  
12.45-13.10 show 2  
13.15-13.40 show 3  
13.45-14.15 show 4

14.30-14.55 show 5  
15.00-15.30 show 6  
15.35-16.00 show 7  
16.05-16.30 show 8 (last  
one of the day)

You may wish to coordinate your visit with one of these. Please note space in the Planetarium is allocated on a first come first served basis.



# PTA News

## Notice of PTA AGM

The PTA AGM will be held in school on Thursday 17th October at 6.45pm. Everyone is welcome to attend to hear about the activities of the PTA across the last year and have your say on the plans for the year ahead.

All PTA committee positions (Chair, Secretary and Treasurer) are up for re-election at the AGM so if you're interested in putting your name forward (or nominating someone else with their permission) then please read the attached Committee role descriptions and complete the nomination form. All nomination forms should be returned to the PTA at [stpeters\\_pta@yahoo.co.uk](mailto:stpeters_pta@yahoo.co.uk) in advance of the meeting. If you want to find out more about what the roles entail, then please get in touch at the email address above.

We hope to see you there.

# PTA Eco Shop

There is a selection of preloved St Peter's emblem uniform available via the PTA Eco Shop. Please follow the link to see what is currently available:

<https://www.pta-events.co.uk/stpeters-pta/index.cfm?event=event&eventId=83382&isProductGroup=true>







## THE RAINBOW TEAM



# The Rainbow Team

**Safeguarding Nurture Wellbeing Behaviour**

**When the rainbow appears in the clouds, I will see it and remember the everlasting covenant between me and all living beings on Earth.**

**Genesis 9:16**



*Mrs Colley: RainbowTeam Lead*

Mrs Colley:	Senior Mental Health Lead Behaviour Lead Designated Safeguarding Lead
Mrs Vinyard:	SENCO
Mrs Harrison:	EYFS / KS1 Deputy Safeguarding Lead
Mrs Davidson:	Pastoral / Nurture

### *Our Early Help approach*

**If you feel your child could benefit from some pastoral support,  
do not hesitate to contact us.**

Our Senior Mental Health Lead ensures that all our pupils who require pastoral care for issues such as bereavement, friendship issues, home issues and anxiety, receive time each week with our pastoral staff who offer over 8 hours of individual and small group sessions.

If you feel that your child could benefit from this offer, please contact Mrs Colley.

The team has regular meeting to discuss and measure the progress of pupils who fall into specific categories, including attendance, wellbeing issues, SEN, behavioural issues and safeguarding.



# SUPERSTARS

## AFTER SCHOOL CLUBS

MONDAY		
Multi sports (Superstars)	Year 5 and Year 6	3.30 – 4.30pm
TUESDAY		
Multi sports (Superstars)	Year 3	3.30 – 4.30pm
Mad Science	Year 1 to Year 6	3.30 – 4.30 pm
Lego Club	Year 1, 2, 3 & 4	3.30 – 4.30pm
WEDNESDAY		
Multi sports (Superstars)	Year 2	3.20 – 4.15pm
Eco Club	Year 6	3.30 – 4.30 pm
THURSDAY		
Multi sports (Superstars)	Year 1	3.20 – 4.15pm
Kidslingo	Year 1, 2 & 3	3.30 - 4.30pm
FRIDAY		
Multi sports (Superstars)	Year 4	3.15 – 4.15pm

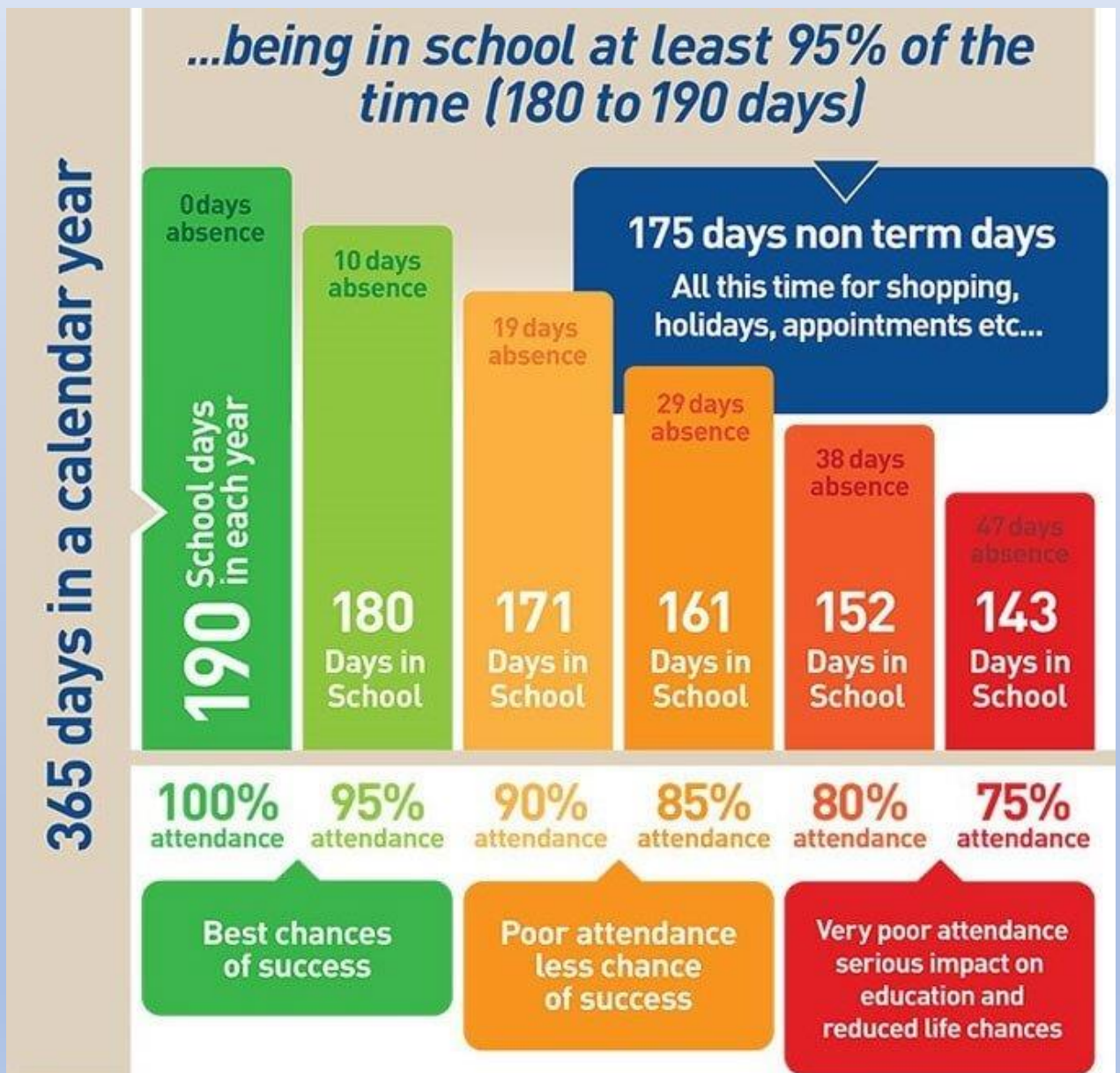


*Please note some of these dates may be subject to change.*

# Attendance

Whole School Target: 98%

Current Average Whole School Attendance: 98.8%





# BAG 2 SCHOOL

## FREE FUNDRAISING FOR SCHOOLS

In partnership with your school or organisation

St Peter's C E Primary School



www.bag2school.com



Bag 2 School is a company that specialises in the reuse and recycling of good quality second-hand clothing and we have arranged to make a collection from your school. All the bags will be weighed and you will be paid for the total weight collected. Remember, the more you collect the greater the benefit to your school.



PLEASE USE YOUR OWN BAGS (THERE IS NO LIMIT).

When the clothes have been removed from the bag the plastic will be packed and sent for recycling.

*We are collecting good quality items for RE-USE:*

**Men's, ladies' & children's clothing, paired shoes, handbags, belts & accessories.**

*(No uniforms, workwear, pillows, duvets or pieces of fabric please)*

***The more we weigh the more we pay!***  
*Extra bags are welcome - there's no limit*

***Please return your Bag2School on:***

Thursday 17 October 2024 by 9:00am



01609 780 222



www.bag2school.com



helpdesk@bag2school.com

## **PHARMACY FIRST - Boots Pharmacy**

Please see the message below from our local Boots Pharmacy:

My Name is Sue and I am the store manager of Boots pharmacy in Market St Newton Le Willows.

I would like to take this opportunity to inform you about the NHS Pharmacy First Service . This service will save time as it will enable patients to be seen by a pharmacist instore for advice and treatment. Listed below are the 7 services we offer and patient eligibility. All conditions will be available 9.30-4.00.

Acute Otitis Media (earache) ages 1-17 years

Impetigo 1year and over

Infected insect bites 1 year and over

Sore Throat 5 years and over

For Adults

UTI 16-64 years

Shingles 18 years and over

All consultations will be recorded and sent to your GP to update your medical record.

Please get in touch if you have any questions.

Kind Regards

Susan Parr  
Store Manager  
01925 225848

## OFFICE NEWS



### DINNER MONEY

If your child wishes to change their lunch preference please advise the office via email giving **a week's notice**. Payment is taken through the School Money Online Payment System, please email [stpeter@sthelens.org.uk](mailto:stpeter@sthelens.org.uk) if you are having issues accessing the system.

### UNIFORM

Uniform can be ordered direct from Touchline UK Liverpool Rd, Warrington, WA5 1AE, 01925 413777

[sales@touchline-embroidery.com](mailto:sales@touchline-embroidery.com)

We also have a small number of items on the School Money site under SHOP which you can pay for then contact school to arrange for them to be sent home with your child.

### ABSENCE

**When reporting on the absence line, can we politely request that you leave a brief description of your child's illness rather than just saying they are unwell.** If your child has vomiting or diarrhoea please note that they should not return to school for a period of 48 hours after the last incident. This is a local authority policy

Applications for Holiday Leave must be submitted to school at **least 4 weeks** in advance. Forms can be found on the school website or requested from the school office. In accordance with Government and Local Authority policy, holidays taken during term time will only be authorised in **exceptional circumstances**.

### CHANGES

It is very important that if you change contact numbers, emails or addresses that you advise us as soon as possible. Any changes must be sent into school via email.

*Thank you*

## Contact Details

St Peter's C.E. Primary School  
Birley Street  
Newton-le-Willows  
WA12 9UR  
01744 678630  
[stpeter@sthelens.org.uk](mailto:stpeter@sthelens.org.uk)  
<https://twitter.com/NLWStPeters>  
[www.st-peters.st-helens.sch.uk](http://www.st-peters.st-helens.sch.uk)

