

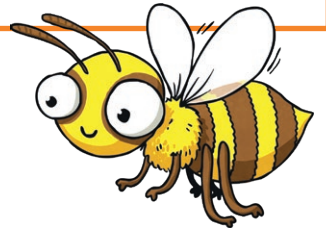
# Spelling Bee's Adverb Sentences

Adding the -ly Suffix to Make Adverbs (where the root word ends in 'y')

Adverbs can be made by adding -ly to the end of other root words. However, when a word ends in 'y' and has more than one syllable, you must change the 'y' to an 'i' before adding -ly.

For example:

sneaky = sneakily



happy

angry

lazy

easy

busy

greedy

messy

weary

cheeky

clumsy

Now, write a sentence using each one of the adverbs you have created.

e.g. **sneakily**: The girl **sneakily** took her doll into the car even though she had been told to leave it at home.

1. \_\_\_\_\_
2. \_\_\_\_\_
3. \_\_\_\_\_
4. \_\_\_\_\_
5. \_\_\_\_\_
6. \_\_\_\_\_
7. \_\_\_\_\_
8. \_\_\_\_\_
9. \_\_\_\_\_
10. \_\_\_\_\_